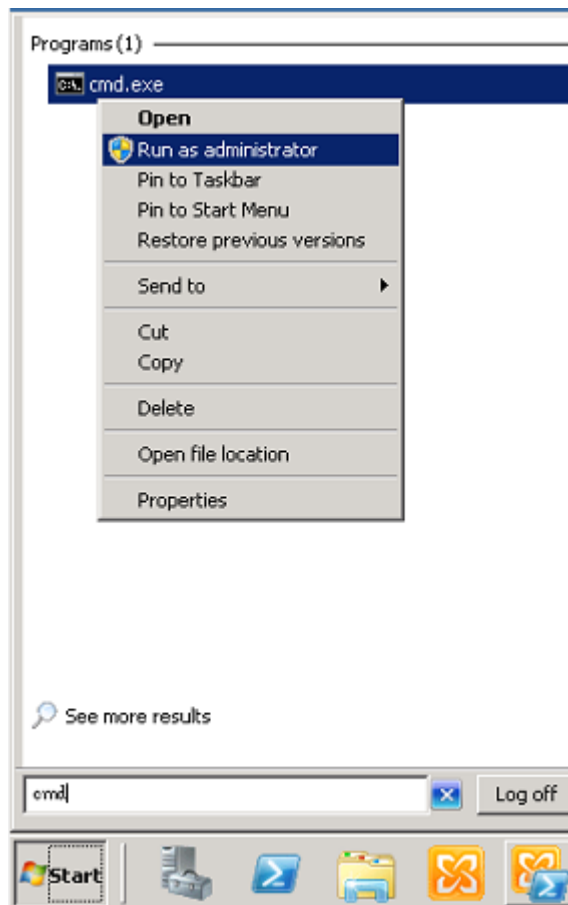


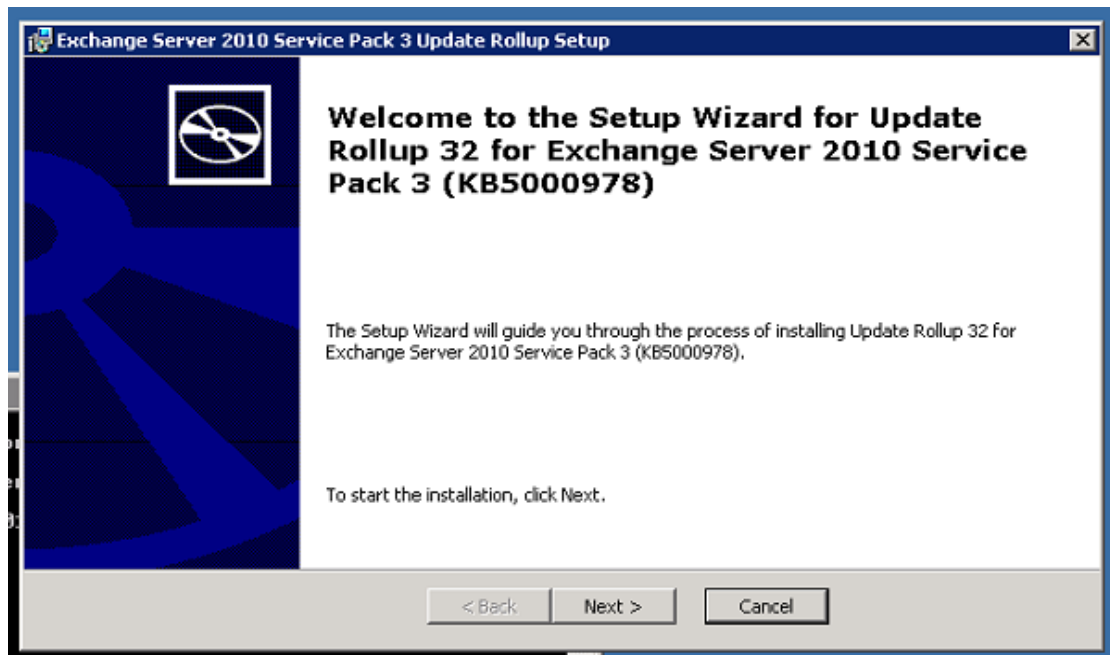
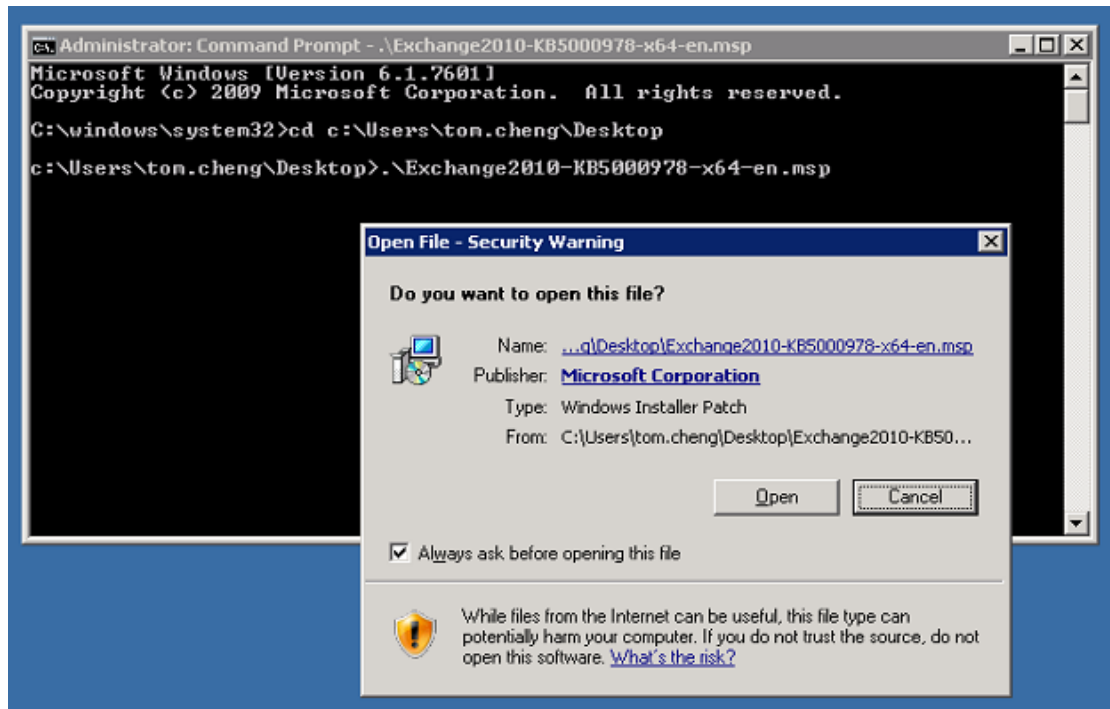
Exchange Server 2010 SP3 RU32

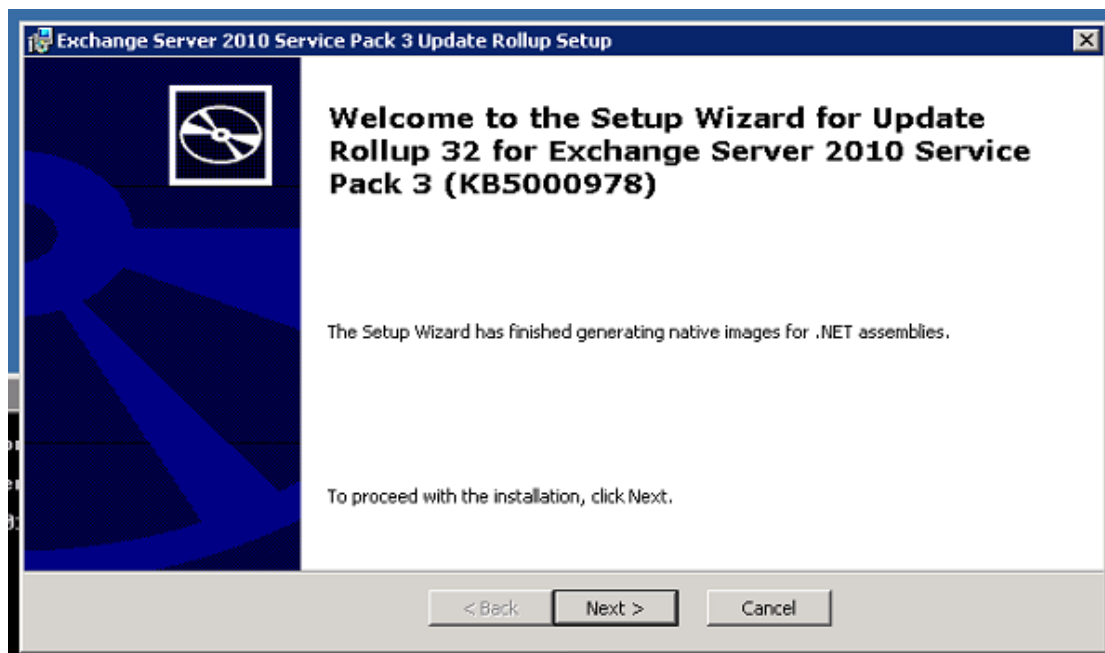
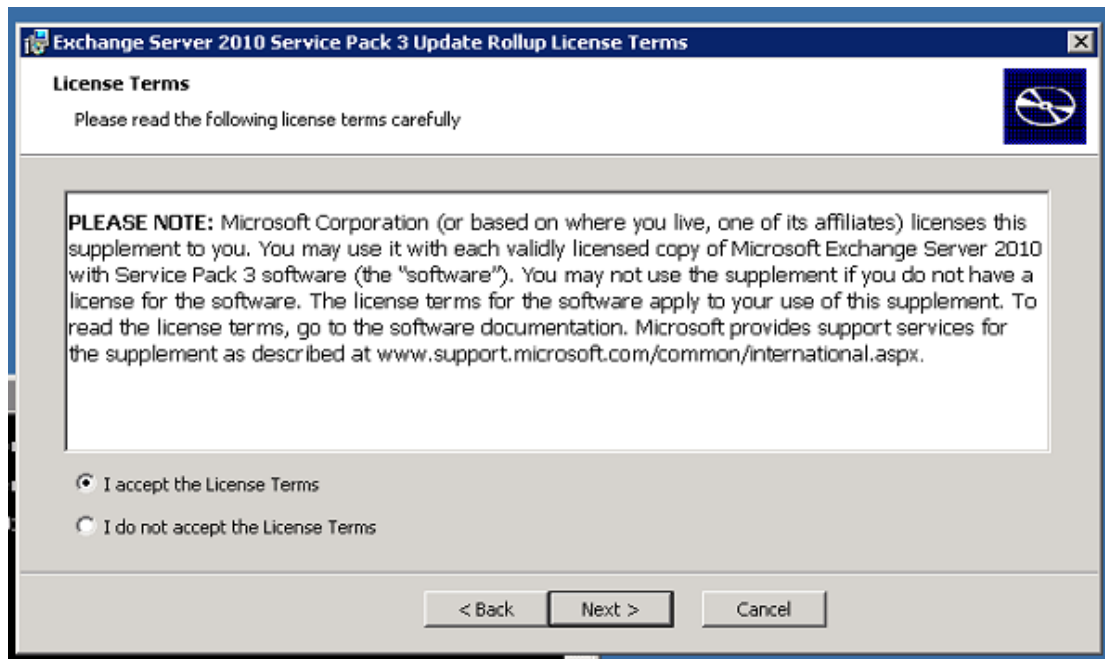
[Description of the security update for Microsoft Exchange Server 2010 Service Pack 3: March 2, 2021 \(KB5000978\)](#)

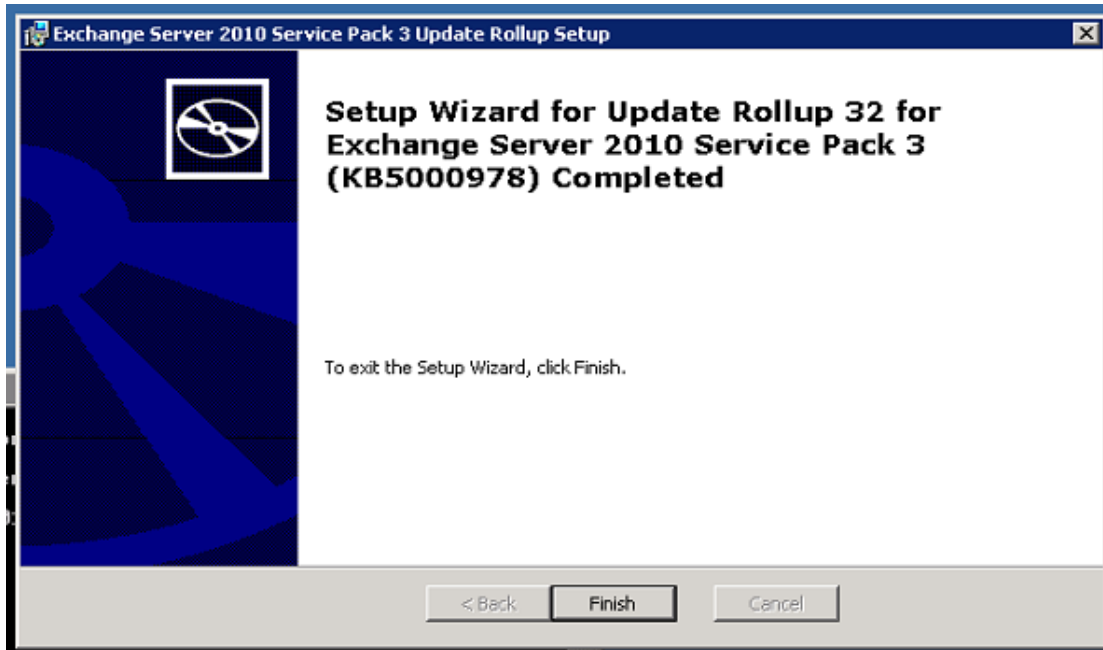
Download link:

[Download Update Rollup 32 For Exchange 2010 SP3 \(KB5000978\) from Official Microsoft Download Center](#)









Get-Command ExSetup | ForEach {\$_.FileVersionInfo}

```

Machine: EX10MBX01.ttomcheng.com
Full list of cmdlets: Get-Command
Only Exchange cmdlets: Get-ExchangeCommand
Cmdlets that match a specific string: Help *string*
Get general help: Help
Get help for a cmdlet: Help <cmdlet name> or <cmdlet name> -?
Show quick reference guide: QuickRef
Exchange team blog: Get-ExchangeBlog
Show full output for a command: <command> | Format-List

Tip of the day #95:
Use this command to find failure messages for all failed moves:
Get-MoveRequest -MoveStatus Failed | Get-MoveRequestStatistics | ft Alias, percentcomplete, message -auto

VERBOSE: Connecting to EX10MBX01.ttomcheng.com
VERBOSE: Connected to EX10MBX01.ttomcheng.com.
[PS] C:\windows\system32>Get-Command ExSetup | ForEach {$_.FileVersionInfo}

ProductVersion      FileVersion      FileName
-----
14.03.0513.000      14.03.0513.000  C:\Program Files\Microsoft\Exchange Server\U14\bin\ExSetup.exe

[PS] C:\windows\system32>

```

Test-ServiceHealth

```

Machine: EX10MBX01.ttomcheng.com

[PS] C:\windows\system32>Test-ServiceHealth

Role : Mailbox Server Role
RequiredServicesRunning : True
ServicesRunning : (IISAdmin, MExchangeADTopology, MExchangeIS, MExchangeMailboxAssistants, MExchangeMailSub
mission, MExchangeRepl, MExchangeRPC, MExchangeSA, MExchangeSearch, MExchangeServiceHost
, MExchangeThrottling, MExchangeTransportLogSearch, W3Svc, WinRM)
ServicesNotRunning : ()

Role : Client Access Server Role
RequiredServicesRunning : True
ServicesRunning : (IISAdmin, MExchangeAB, MExchangeADTopology, MExchangeFBA, MExchangeFDS, MExchangeMailbo
xReplication, MExchangeProtectedServiceHost, MExchangeRPC, MExchangeServiceHost, W3Svc, Wi
nRM)
ServicesNotRunning : ()

Role : Hub Transport Server Role
RequiredServicesRunning : True
ServicesRunning : (IISAdmin, MExchangeADTopology, MExchangeEdgeSync, MExchangeServiceHost, MExchangeTranspo
rt, MExchangeTransportLogSearch, W3Svc, WinRM)
ServicesNotRunning : ()

```

